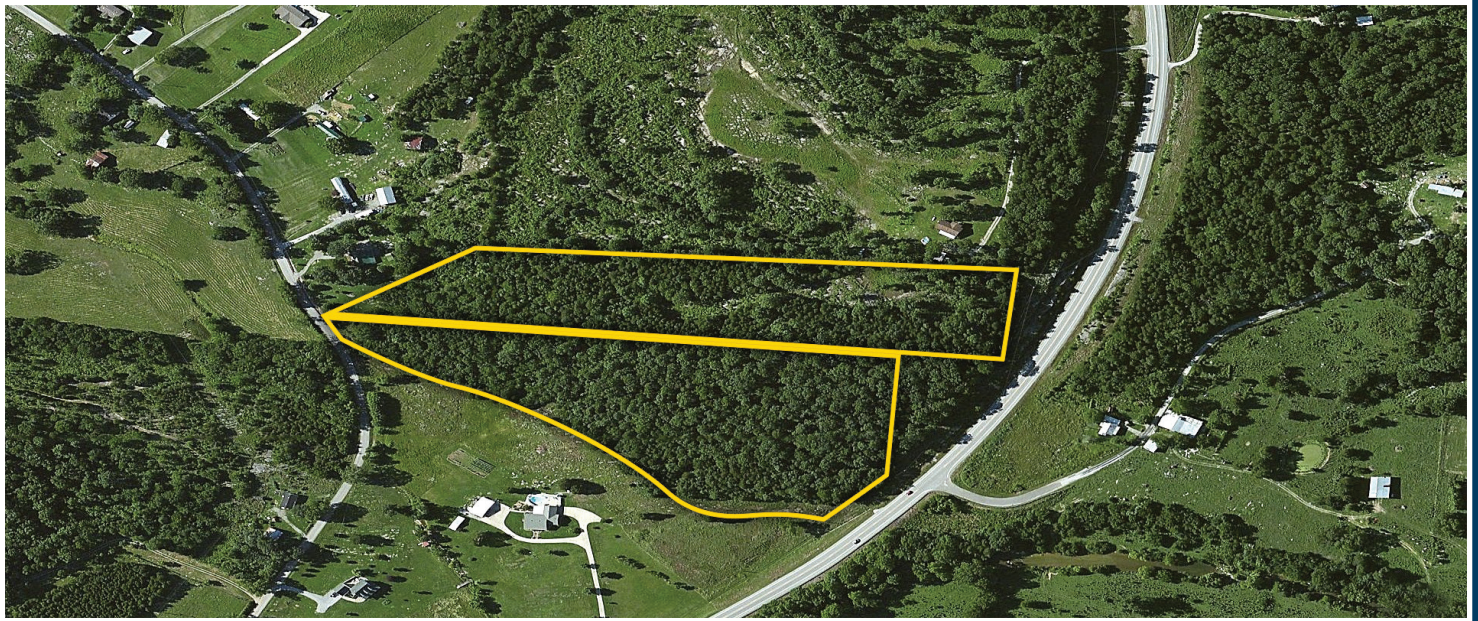


Saturday, December 2nd, 2017 @ 10:00 A.M.

CHANCERY COURT AUCTION

14.62 ACRES IN TWO TRACTS

1 Alexandria Hwy 53, Alexandria, TN 37012



Located only 6 miles off I-40 at exit 254 (Alexandria). 14.62 acres in two tracts. These two tracts consist of an 8.01 acre tract and a 6.61 acre tract. Property fronts both Alexandria Hwy 53 and Brush Creek Circle.



DIRECTIONS: From Nashville take I-40 East to exit 254 (Alexandria), turn right. Go 6 miles to property on right.

For Details Call Listing Agents Tammy Maggart 615-418-5487 or Angela Bates 615-418-5601



Firm# 5725

Visit Us Online at
DiscoverRealtyAndAuction.com

(615)444-9800

*Sale day announcements take precedence over any advertisement.
Information believed to be accurate but not guaranteed.*

Auctioneer
Jeff Hallums #3936 (615) 478-7853
Auctioneer
Matthew Whitaker #6164 (615) 948-1900

155 Legends Drive, Suite P • Lebanon, TN 37087

Seller: Smith County Chancery Court - **MLS# 1876710**

Referring agents: Angela Bates & Tammy Maggart

Sale Date Terms: This is a Chancery Court Sale and the winning bidder will be required to write a check for the full amount to the Clerk & Master of Smith County, Tennessee the day of the sale. This check will NOT be cashed until delivery of deed. The 2017 taxes are the responsibility of the buyer. For details contact Smith County Chancery Court Clerk & Master Tommy Dillehay 615-735-2092 or listing agents Tammy Maggart 615-418-5487 or Angela Bates 615-418-5601 with Discover Realty & Auction.