



Auctioneer
Jeff Hallums #3936 (615) 478-7853

Auctioneer
Matthew Whitaker #6164 (615) 948-1900

155 Legends Drive, Suite P
Lebanon, TN 37087

ON-SITE LIVE AUCTION

PRESORTED
STANDARD
U.S. Postage
PAID
37087
PERMIT NO. 131

**159 TOTAL ACRES SELLING IN MULTIPLE TRACTS
ZONED COMMERCIAL W/ CITY WATER/SEWER**

428 Gordonsville Hwy, Gordonsville, TN 38563

DIRECTIONS: From Nashville take I-40 East to Carthage/Gordonsville Exit 258. Turn left and go 1/2 mile to property on left.

LOCATED 1/2 MILE OFF I-40

Visit Us Online at DiscoverRealtyAndAuction.com

ON-SITE LIVE AUCTION



For details call Auctioneers
Jeff Hallums or Matthew Whitaker

(615)444-9800

Saturday, July 11th, 2020 @ 10:00 A.M.

ON-SITE LIVE AUCTION

428 Gordonsville Hwy, Gordonsville, TN 38563



41.99 ACRES ZONED COMMERCIAL W/CITY WATER/SEWER



117 ACRES FARM LAND

Selling 8 - Five acre tracts currently zoned C-2 (Highway Commercial) with city water & city sewer at road. Also selling 117 acre tract with frontage on Gordonsville Hwy. Located 1/2 mile off I-40 at the Carthage/Gordonsville exit. 11,480 Annual Average Daily Traffic Count (AADT).

Located 1/2 mile off I-40 • 11,480 Annual Average Daily Traffic Count



Sale Date Terms: Real estate is selling "As Is" and "Where Is". Title opinion to be provided to buyer. Selling subject to deed and legal description. 10% Non-refundable deposit day of sale with balance due at closing in approximately 30 days. No inspection, finance or any other contingencies. Discover Realty & Auction represent the sellers of this property. For more information contact listing agents Tammy Maggart 615-418-5487 or Angela Bates 615-418-5601 with Discover Realty & Auction. Announcements made day of sale take precedence over printed material.

Seller: Rickey Hunter

Listing Agents: Tammy Maggart & Angela Bates - MLS# 2158211

Bank Terms: Contact Jason Hall, 615-683-3990, at Wilson Bank & Trust Gordonsville or Bob Malone, 615-683-8243 at Citizens Bank Gordonsville or Pat Nixon at Smith County Bank 615-735-2800 to prequalify.

Visit Us Online at DiscoverRealtyAndAuction.com



(615)444-9800

Sale day announcements take precedence over any advertisement. Information believed to be accurate but not guaranteed.

Auctioneer
Jeff Hallums #3936 (615) 478-7853

Auctioneer
Matthew Whitaker #6164 (615) 948-1900

155 Legends Drive, Suite P • Lebanon, TN 37087

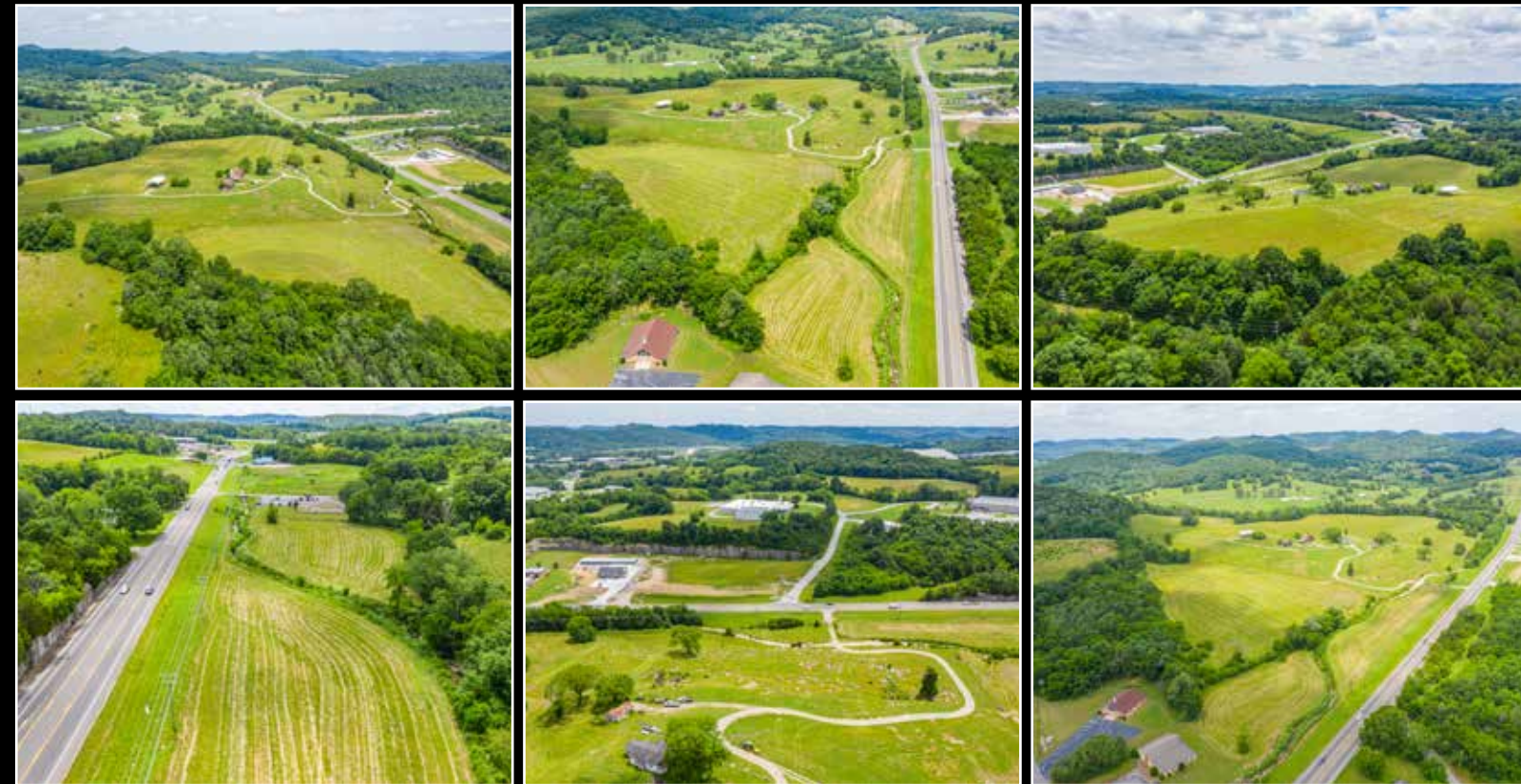
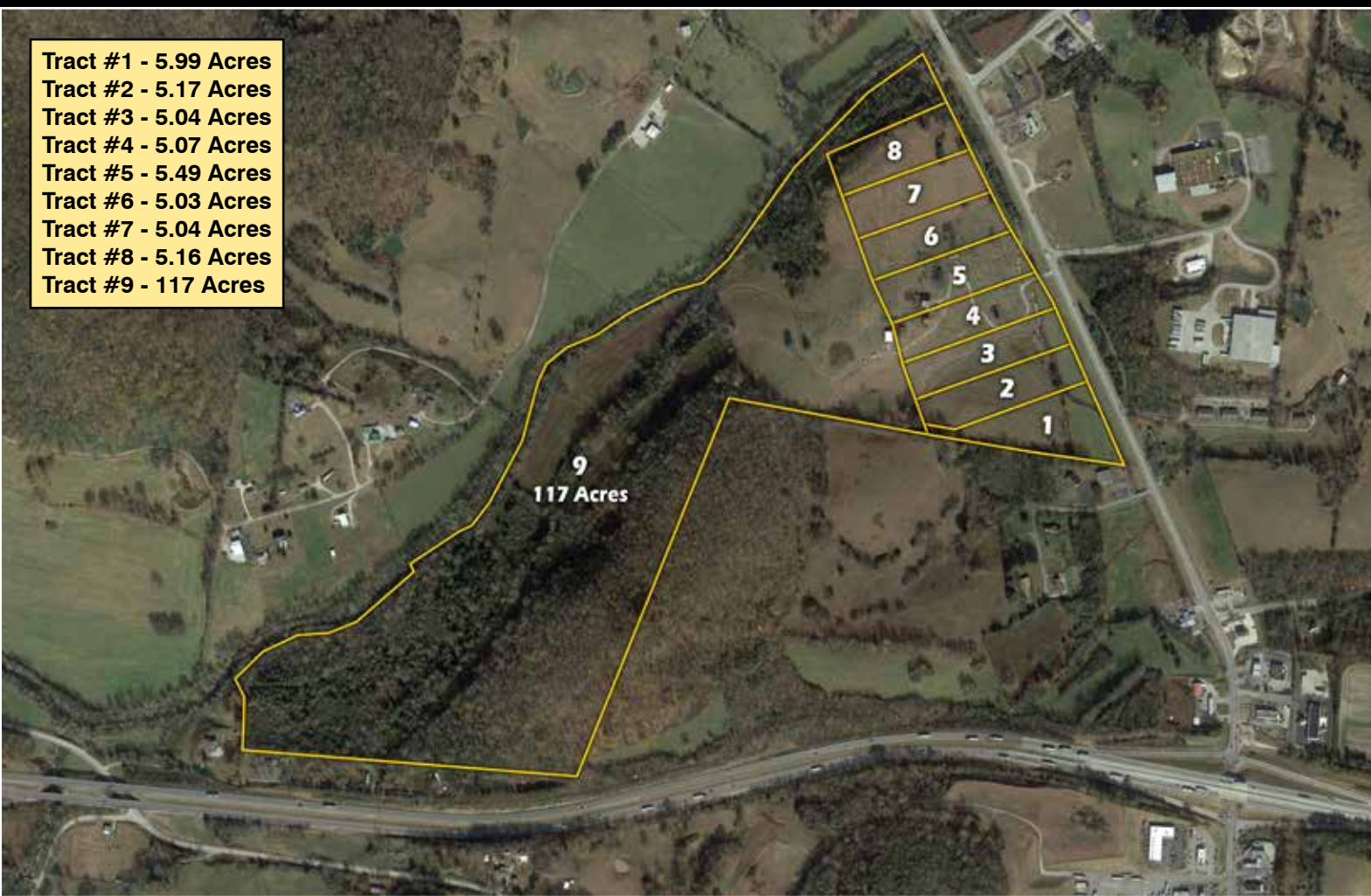
DIRECTIONS: From Nashville take I-40 East to Carthage/Gordonsville Exit 258. Turn left and go 1/2 mile to property on left.

Firm# 5725

Saturday, July 11th, 2020 @ 10:00 A.M.

Located 1/2 mile off I-40 • 11,480 Annual Average Daily Traffic Count

- Tract #1 - 5.99 Acres
- Tract #2 - 5.17 Acres
- Tract #3 - 5.04 Acres
- Tract #4 - 5.07 Acres
- Tract #5 - 5.49 Acres
- Tract #6 - 5.03 Acres
- Tract #7 - 5.04 Acres
- Tract #8 - 5.16 Acres
- Tract #9 - 117 Acres



For Details Call Listing Agents Tammy Maggart 615-418-5487 or Angela Bates 615-418-5601

