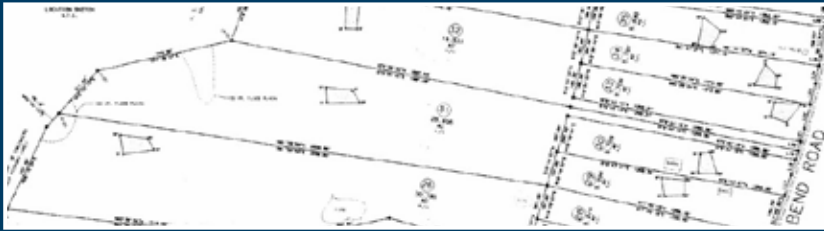


Saturday, March 20th, 2021 @ 10:00 A.M.

ABSOLUTE AUCTION

Tract 31 Cairo Bend Rd, Lebanon, TN 37087



BEAUTIFUL, 28 ACRES OF RIVER FRONT PROPERTY SELLING AT ABSOLUTE AUCTION



3% Agent Referral Paid

For Details Call Listing Agent Matthew Whitaker (615) 948-1900

28 level-open acres with 1,026 feet of frontage on Cumberland River! 4 Bedrooms soils area. One mile from Sandy Chapel Boat Ramp. Two ponds on property. Selling at absolute auction on 3/20/21 at 10 AM.

DIRECTIONS: Located to the right of 8350 Cairo Bend Rd. From Nashville take I-40 East to exit 232B (Gallatin Hwy 109). Go 3.5 miles and turn right on Lebanon Rd, then 1.7 miles to left on Cairo Bend Rd. Go 3.4 miles and turn right on Coles Ferry Pike and then immediately left on Cairo Bend Rd. Go 5 miles to property on left.

Listing agent: Matthew Whitaker

Sale Date Terms: Real estate is selling "As Is" and "Where Is". Title opinion to be provided to buyer. Selling subject to plat, deed and legal description. 10% Non-refundable deposit day of sale with balance due at closing in approximately 30 days. No inspection, finance or any other contingencies. 5% Buyers Premium. Discover Realty & Auction represent the sellers of this property. For more information contact listing agent Matthew Whitaker 615-948-1900 with Discover Realty & Auction. Announcements made day of sale take precedence over printed material. Referring agents must pre-register their clients no later than 24 hours prior to auction.

Bank Terms: Contact Daniel Sampson 615-772-6389 with Wilson Bank & Trust to pre-qualify.

Visit Us Online at
DiscoverRealtyAndAuction.com

(615)444-9800

Sale day announcements take precedence over any advertisement.
Information believed to be accurate but not guaranteed.

Auctioneer Jeff Hallums #3936 (615) 478-7853
Auctioneer Matthew Whitaker #6164 (615) 948-1900

155 Legends Drive, Suite P • Lebanon, TN 37087



Firm# 5725



Auctioneer
 Jeff Hallums #3936 (615) 478-7853

Auctioneer
 Matthew Whitaker #6164 (615) 948-1900

155 Legends Drive, Suite P
 Lebanon, TN 37087

ABSOLUTE AUCTION

PRESORTED
 STANDARD
 U.S. Postage
 PAID
 37087
 PERMIT NO. 131

BEAUTIFUL RIVER FRONT PROPERTY SELLING ABSOLUTE
Saturday, March 20th, 2021 @ 10:00 A.M.



1,026 FEET OF FRONTAGE ON CUMBERLAND RIVER



3% Agent Referral Paid - For Details Call Listing Agent Matthew Whitaker (615) 948-1900

TRACT 31 CAIRO BEND RD, LEBANON, TN 37087



Auctioneer
 Jeff Hallums #3936
 (615) 478-7853



Auctioneer
 Matthew Whitaker #6164
 (615) 948-1900

(615) 444-9800

155 Legends Drive, Suite P • Lebanon, TN 37087

Sale day announcements take precedence over any advertisement. Information believed to be accurate but not guaranteed.